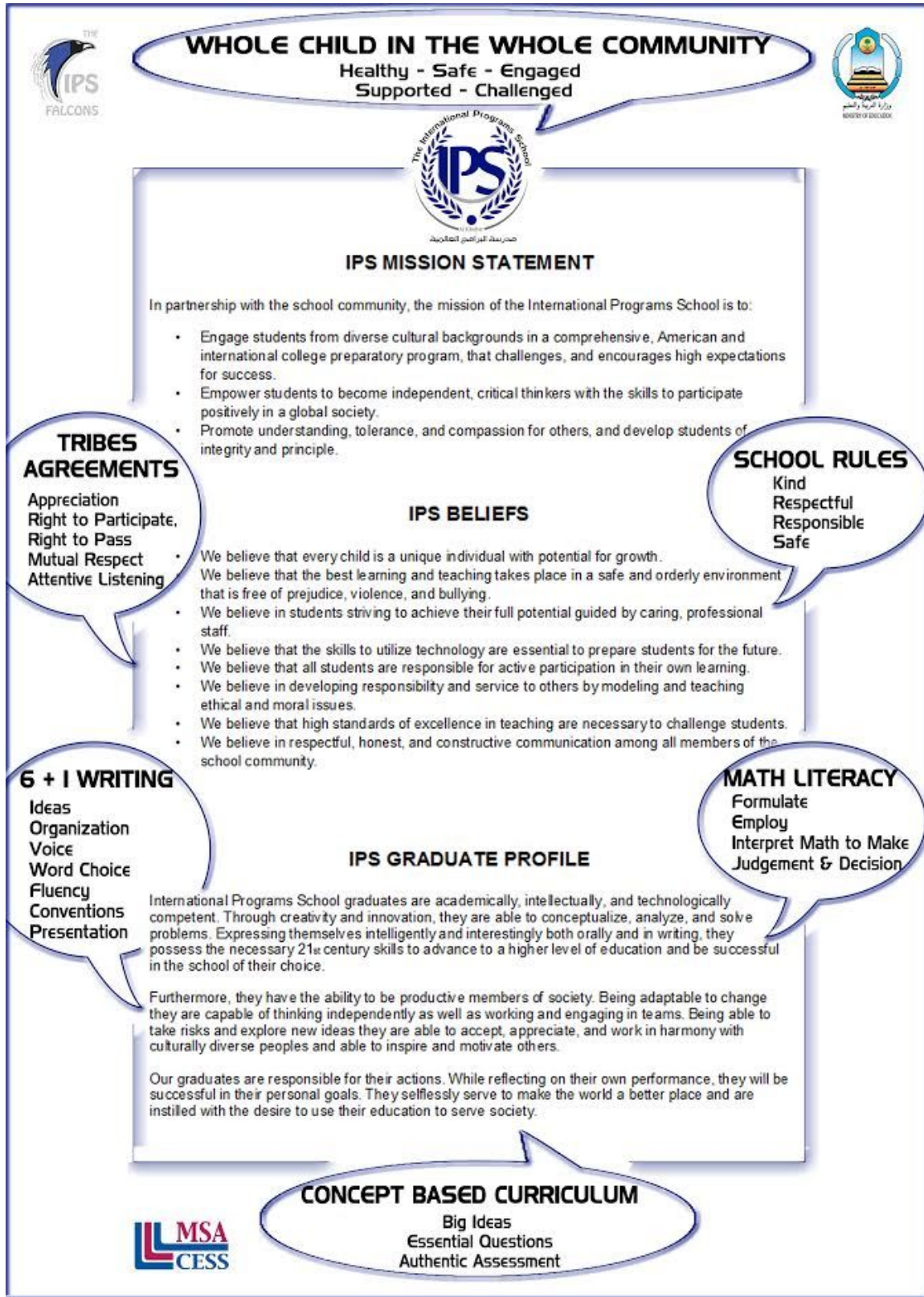




IPS Information & Enrollment Procedure

Revised in March 04, 2018

IPS Mission, Beliefs and Graduate Profile



IB mission statement

“The International Baccalaureate aims to develop inquiring, knowledgeable and caring young people who help to create a better and more peaceful world through intercultural understanding and respect. To this end the organization works with schools, governments and international organizations to develop challenging programmes of international education and rigorous assessment. These programmes encourage students across the world to become active, compassionate and lifelong learners who understand that other people, with their differences, can also be right.” (© International Baccalaureate Organization)

IB Learner profile



IB learner profile

The aim of all IB programmes is to develop internationally minded people who, recognizing their common humanity and shared guardianship of the planet, help to create a better and more peaceful world.

As IB learners we strive to be:

<p>INQUIRERS We nurture our curiosity, developing skills for inquiry and research. We know how to learn independently and with others. We learn with enthusiasm and sustain our love of learning throughout life.</p>	<p>OPEN-MINDED We critically appreciate our own cultures and personal histories, as well as the values and traditions of others. We seek and evaluate a range of points of view, and we are willing to grow from the experience.</p>
<p>KNOWLEDGEABLE We develop and use conceptual understanding, exploring knowledge across a range of disciplines. We engage with issues and ideas that have local and global significance.</p>	<p>CARING We show empathy, compassion and respect. We have a commitment to service, and we act to make a positive difference in the lives of others and in the world around us.</p>
<p>THINKERS We use critical and creative thinking skills to analyse and take responsible action on complex problems. We exercise initiative in making reasoned, ethical decisions.</p>	<p>RISK-TAKERS We approach uncertainty with forethought and determination; we work independently and cooperatively to explore new ideas and innovative strategies. We are resourceful and resilient in the face of challenges and change.</p>
<p>COMMUNICATORS We express ourselves confidently and creatively in more than one language and in many ways. We collaborate effectively, listening carefully to the perspectives of other individuals and groups.</p>	<p>BALANCED We understand the importance of balancing different aspects of our lives—intellectual, physical, and emotional—to achieve well-being for ourselves and others. We recognize our interdependence with other people and with the world in which we live.</p>
<p>PRINCIPLED We act with integrity and honesty, with a strong sense of fairness and justice, and with respect for the dignity and rights of people everywhere. We take responsibility for our actions and their consequences.</p>	<p>REFLECTIVE We thoughtfully consider the world and our own ideas and experience. We work to understand our strengths and weaknesses in order to support our learning and personal development.</p>

The IB learner profile represents 10 attributes valued by IB World Schools. We believe these attributes, and others like them, can help individuals and groups become responsible members of local, national and global communities.

© International Baccalaureate Organization 2013
International Baccalaureate® | Baccalaureat International® | Bachillerato Internacional®

Introduction

The International Programs School (IPS) opened in 2000 with 19 pupils and currently has approximately 740 students representing over 31 different nationalities. IPS is a gender-segregated school that offers a North American curriculum, with International Baccalaureate Primary Years Programme (PYP) candidacy and Diploma Programme (DP) authorization. Our faculty is a diverse mix of 93 teachers and administrators from over 10 different nationalities: American, Canadian, British, Lebanese, and Saudis to mention some. We pride ourselves in providing a top quality classroom environment for our students. IPS is fully accredited by the Middle States Association of Colleges and Schools and is licensed by the Saudi Ministry of Education.

IPS is an educational community whose purpose and mission is to educate young people intellectually, morally and physically. The school recognizes the special circumstances in which parents find themselves in relation to the education of their children when they bring their families overseas, and welcomes applications for admission from all in the community whose children can benefit from the education offered at the school. The school's mission and beliefs underpin all that goes on in the school and are a clear indication to parents as to our approach to education. We believe that the education of the children and young people in our care is particularly enhanced by a positive partnership between parent and school.

IPS accepts both local and expatriate children, ages 4 to 18, without discrimination of gender, race, religion or nationality.

Admissions Policy Aims

- To establish consistency regarding admissions and placement
- To inform parents about IPS's ethos, mission and programs
- To place students at age-appropriate grade level

School owner: Ms. Haifa Mubarak Al Suwaiket
Director: Mr. Jim Leahy
KG-G3 Principal: Ms. Linda Amin
G4-G12 Boys' Principal: Mr. Mark Decker
G4-G12 Girls' Principal: Ms. Lorraine Els
Saudi Girls' Principal: Ms. Elham Al Jaafar
Saudi Boys' Principal: Mr. Majed Abubshait

Enrollment Procedures

Applications for admission are accepted throughout the year. Families seeking admission first meet the Admissions Recruiter, who will provide them with verbal and written information regarding the application process. Enrollment procedure information and forms are available on the school website, ipsksa.com

All students admitted to IPS must live with parents or an authorized adult guardian. When a student does not live with a parent, the Director, or a designee, will investigate and make a determination concerning a possible waiver.

Priority for admission is given to those who, by virtue of their previous education experience, prefer to attend an English-speaking international school. Students should, therefore, be fluent in English or be at a stage where they can achieve fluency given limited specialist support. Priority is also given to siblings of those already at IPS, children of IPS staff, and returning students. New families are prioritized in the order according to the date of their application.

IPS provides language and learning support, as stated in the [Language Policy](#), for those with specific needs. However, resources are limited and we are unable to admit students with significant academic or physical needs. For students with learning difficulties, a psychological report should also be provided. Failure to notify the school of such significant academic or physical needs may result in immediate withdrawal.

Each candidate's application materials are carefully studied in order to assess suitability for admission.

- Grades K- 6 / Primary Years Programme (PYP) currently in candidacy phase
 - The PYP at IPS looks for students who are motivated and determined with average to excellent academic performance. We seek students who are respectful to others, internationally-minded, and whose personal characteristics enrich the community.
- Grades 7-10
 - IPS offers an academically sound, concept-based program with Ontario standards that aims to develop balanced individuals who display IB learner profile attributes.
- Grades 11-12 / Diploma Programme (DP) - currently in candidacy phase
 - The IBDP offers a 2-year challenging, university preparatory, academic program that leads to an IB diploma at the completion of grade 12. Grade 11 (IB1) and 12 (IB2) students must take six IB classes (3 standard and 3 higher levels), Theory of Knowledge (TOK), and completes Creativity, Activity and Service (CAS), and Extended Essay (EE) requirements. All students must also comply with the Saudi Ministry of education requirements.

Our grade level brochures are available as hard copies in the main offices, and linked here for your convenience

KG	Grade 1	Grade 2	Grade 3	Grade 4	Grade 5	Grade 6
Grade 7	Grade 8	Grade 9	Grade 10	Grade 11	Grade 12	

IPS is now authorized as an IB Diploma school, teaching of the IB Diploma Programme will start with the next academic year (2017-2018) for grade 11.

"International Programs School is a candidate school* for the IB Primary Years Program (PYP). This school is pursuing authorization as an IB World School. These are schools that share a common philosophy - a commitment to high-quality, challenging, international education that International Programs School believes is important for our students.

*Only schools authorized by the IB Organization can offer any of its four academic programs: The Primary Years Programme (PYP), the Middle Years Programme (MYP), the Diploma Programme (DP) or the Career-related Programme (CP). Candidate status gives no guarantee that authorization will be granted.

For further information about the IB and its programs, visit <http://www.ibo.org>"

Once IPS becomes an IB authorized school, all KG through G6, and 11th and 12th courses will be part of the IB program, with the addition of Saudi requirements (Arabic Language, Saudi History and Geography, Islamic Studies, and Islamic Culture.

Registration

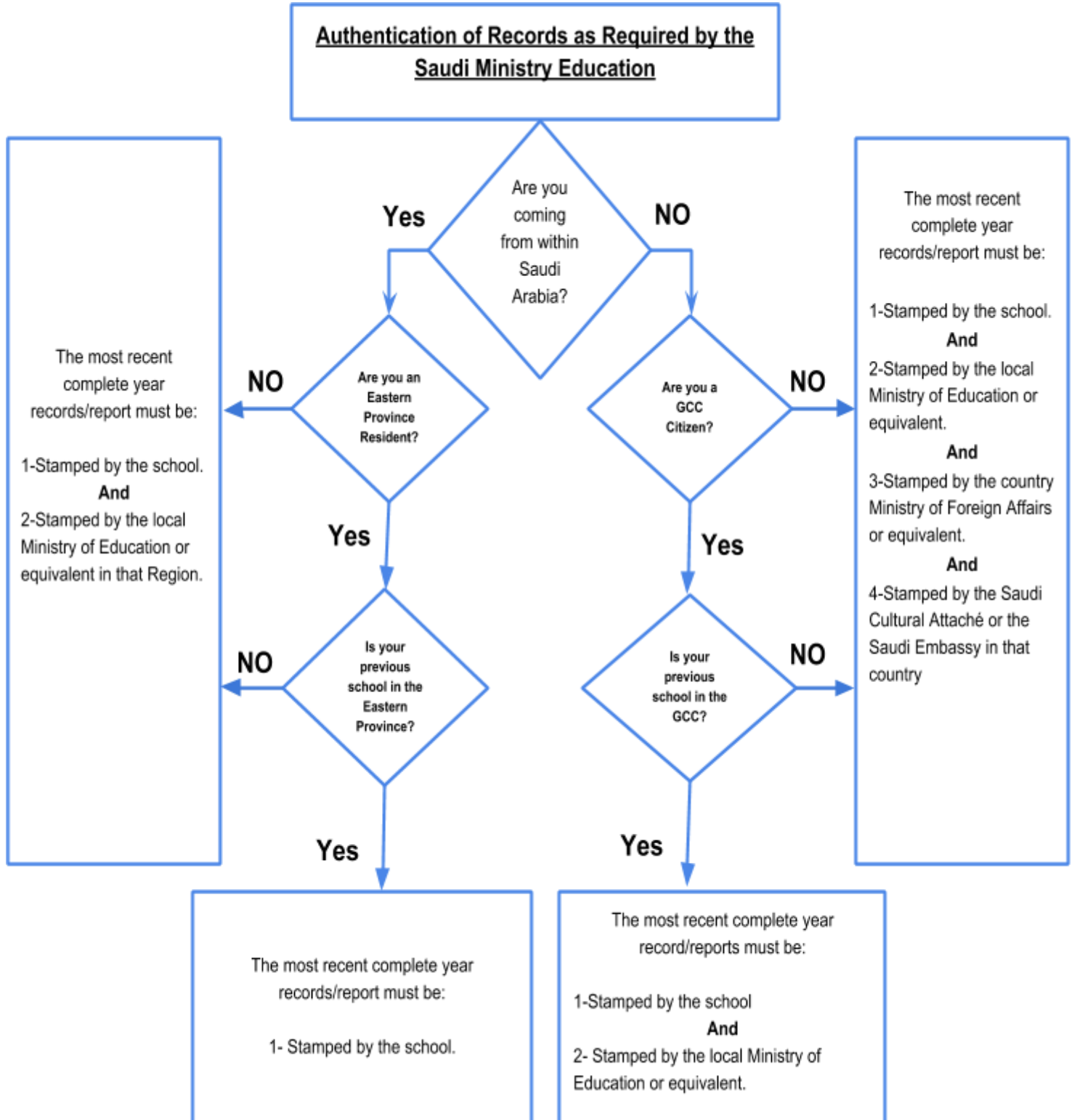
The following documents **must** be submitted when applying for enrollment. All documents must be submitted in the native English or Arabic languages, or in official English translation. Submission of the application form and documents does not guarantee that a child will be accepted to IPS.

- Fully completed application form with all required signatures
- Signed IPS Mission Statement and Beliefs
- Photocopy of the academic report cards for the previous three years (current year + last two years) in English or Arabic
- Academic records must meet the Ministry of Education requirements (see diagram)
- High school applicant must submit a complete Transcript of Records with stamp and signature
- Current school Confidential Recommendation letter, click on the links below & follow grade- specific document
 - IPS reserves the right to contact the transferring school if a student wishes to transfer to IPS from another international school in the Al Khobar area.
 - [Kindergarten Recommendation Letter](#)
 - [Grade 1-5 Recommendation Letter](#)
 - [Grade 6-12 Recommendation Letter](#)
- Photocopy of parents' and child's passports
- Photocopy of child's birth certificate
- Photocopy of parents' and child's Iqama / Saudi family I.D. (front and back)/ GCC ID
 - Note: If the student's Iqama is in process, there should be a copy of the resident visa and a letter from the sponsoring company stating the Iqama is in process
- Employment letter from parent's company in Saudi Arabia (for expats only)

Additional documents required upon acceptance (soft or hard copy):

- Copy of standardized test results, if any
- Final report card from the previous school (see diagram above)
- Statement of Checkout or Leaving/ Transfer Certificate from previous school stating the student is promoted to the next grade level (should indicated that all fees have been paid)
- Photocopy of student's Ministry Approval, if coming from a K.S.A. school

IPS medical form, completed, signed, and stamped by a physician from within K.S.A.





Admissions Assessment

When application forms and documents have been completed and submitted, your child will be given an admissions assessment schedule and payment of the non-refundable testing fee (750 SAR, cash only) will be collected. Incomplete application forms and documents will not be accepted and an admission assessment will not be scheduled. If the maximum class size has been reached before the scheduled admissions assessment, the assessment fee will be reimbursed.

Admission Decision

- The Admission Team (principals + director) will use the chart/rubric below to reach a final recommendation
- Administration reserves the right to require re-testing before making a final decision
- The final decision to admit rests with the Administration Team and ultimately the Director

Acceptance & Enrollment Fee

Families will be notified via email and/or phone call of assessment results within seven business days of the assessment date. If accepted, families are immediately required to pay the nonrefundable enrollment fee to ensure the student's placement in the class; the student's enrollment is not official until this step is completed. Failure to attend school within two weeks of enrollment and/or start of the school year will result in withdrawal from IPS.

Tuition Fees - Once officially enrolled, the school's finance department will provide an invoice that details payment guidelines and installments due dates. No student can attend school until the first installment of tuition fees has been received. We accept only wire transfers, cash, or bank drafts; personal checks are not accepted.

Tuition/Fee refunds for Early Withdrawal AND obligations for Late Entry/Acceptance will be based on semester (2 times per year) attendance. If a student attends up to 20 days of a semester, semester tuition will be prorated by week. If a student attends 20-40 days of the semester, 50% semester tuition is refunded. If a student attends 40 or more days of a semester, full semester tuition applies and there is no refund.

Waiting List – The high demand for enrollment at IPS implies that there might be a waiting list, in this case parents will be notified. When a place becomes available it will be offered to the first student in the list; however, siblings will be given preference.

Admission Cycle

The IPS admission assessments follow this cycle below. Other testing dates may be established on an as needed basis with Director & Principals' approval.

- January
 - 3rd week: IPS begins accepting applications - only complete applications will be scheduled for assessment.
- February
 - 3rd week: Admission assessment for IPS siblings, waitlist candidates, and staff children. These are scheduled on a first come first served basis. Re-enrollment forms for current students will be distributed with trimester 2 report cards.
 - Re-enrollment deposits are due two weeks after forms are distributed.
 - Deposits are made to secure a spot for the next year; however, deposits do not ensure advancement to the next grade level - this is determined by academic achievement, teacher recommendation in consultation with principals.
- March / April / May
 - Wednesdays as per the schedule - Admission assessments for all applicants scheduled on a first come first served basis.
 - International candidates who qualify for admission based on their academic records and their most recent standardized test results, such as the Stanford or the Star test, will be allowed to take the admissions assessment upon arrival to the Kingdom. To that effect the administration will reserve a seat in the appropriate grade level pending the admissions test results.
- November / December - Annual review of admissions materials.

ANNEX 1: Yearly tuition fees (2016 - 2017)

(These **are** the same for 2017-2018, and MAY be different for 2018-19)

Grade	Enrollment Fee (non-refundable)	Annual Tuition	1st Installment due Sept 1, 2018	2nd Installment due Feb 01, 2019
KG1 (1/2 day program) Boys and Girls	SR 4,000 +VAT	SR 28,000 +VAT	SR 14,000 +VAT	SR 14,000 +VAT
KG2 Boys and Girls	SR 4,000 +VAT	SR 39,250 +VAT	SR 19,625 +VAT	SR 19,625 +VAT
G1 – G3 Boys and Girls	SR 4,000 +VAT	SR 44,000 +VAT	SR 22,000 +VAT	SR 22,000 +VAT
G4 Girls	SR 4,000 +VAT	SR 44,000 +VAT	SR 22,000 +VAT	SR 22,000 +VAT
G4 Boys	SR 4,000 +VAT	SR 39,000 +VAT	SR 19,500 +VAT	SR 19,500 +VAT
G5 - G6 Girls	SR 4,000 +VAT	SR 46,750 +VAT	SR 23,375 +VAT	SR 23,375 +VAT
G5 - G6 Boys	SR 4,000 +VAT	SR 41,750 +VAT	SR 20,875 +VAT	SR 20,875 +VAT
G7 - G8 Girls	SR 4,000 +VAT	SR 47,750 +VAT	SR 23,875 +VAT	SR 23,875 +VAT
G7 - G8 Boys	SR 4,000 +VAT	SR 42,750 +VAT	SR 21,375 +VAT	SR 21,375 +VAT
G9 Girls	SR 4,000 +VAT	SR 51,750 +VAT	SR 25,875 +VAT	SR 25,875 +VAT
G9 - G12 Boys	SR 4,000 +VAT	SR 46,750 +VAT	SR 23,375 +VAT	SR 23,375 +VAT
G10 – G12 Girls	SR 4,000 +VAT	SR 51,750 +VAT	SR 25,875 +VAT	SR 25,875 +VAT

Notes:

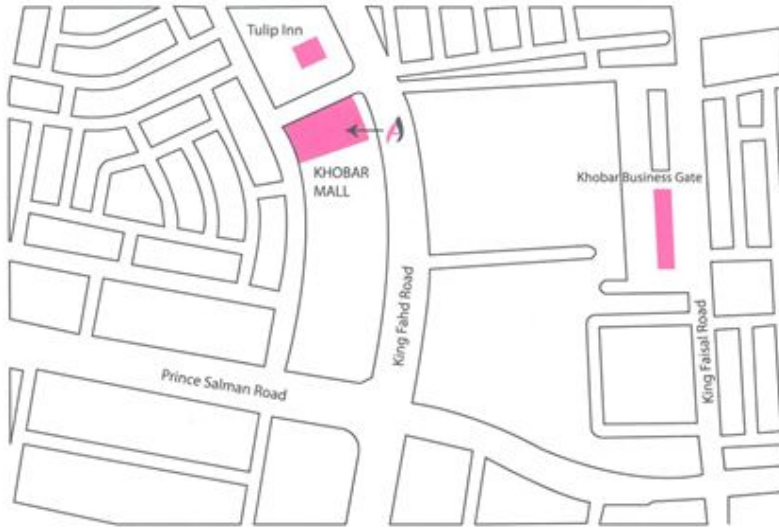
- Above fees are quoted in Saudi Riyals. Tuition fees include the use of books.
- Tuition fee discounts are given to parents with three or more children:
 - 25% discount for the third child
 - 50% discount for the fourth and fifth child
- Students are allowed to attend school only after 1st installment tuition fees have been paid.
- Tuition/Fee refunds for Early Withdrawal AND obligations for Late Entry/Acceptance will be based on semester (2 times per year) attendance. If a student attends up to 20 days of a semester, semester tuition will be prorated by week. If a student attends 20-40 days of the semester, 50% semester tuition is refunded. If a student attends 40 or more days of a semester, full semester tuition applies and there is no refund.
- Payment may be made by Wire Transfer or Bank Draft to the following:
 - Account Name: **International Programs School**
 - Bank Name: **Riyad Bank**
 - Account #: **3160751039940**
 - IBAN #: **SA22 2000 0003 1607 5103 9940**
 - SWIFT Code: **RIBLSARIXXX**
- Personal checks are not accepted.

ANNEX 2: Uniforms

The IPS uniform consists of:

- Polo Shirt with IPS Logo (Boys & Girls: all grade levels), short sleeves and long sleeves
- Navy Blue Dress Pants (Boys & Girls: all grade levels)
- Checkered Blue Culottes Skirt (Girls: KG1 – G6)
- Navy Blue Dress Shorts (Boys: KG1 – G5)
- Blue P.E. T-Shirt with IPS Falcon Logo (Boys & Girls: all grade levels)
- Navy Sports Trousers (Boys & Girls: all grade levels)
- Navy Sports ¾ Bermuda (Boys & Girls: all grade levels)
- Navy Sports Jacket (Boys & Girls: all grade levels)
- Navy Winter Jacket (Boys & Girls: all grade levels)

****Uniforms are on sale at this location:****



Store Name: Adeem Uniform
Location: Shop 198-199, 2nd Floor, Khobar Mall,
King Fahad Road
Store Hours: 9:30 am - 11:30 am & 4:00 pm - 9:30
pm
Phone No.: (013) 882-0534
Website: www.adeemuniform.com

